

MONTHLY MEMBERSHIP PROGRESS REPORT

LOCATION NEW HAMPSHIRE

District 44 H

Results as of: 5/31/2022

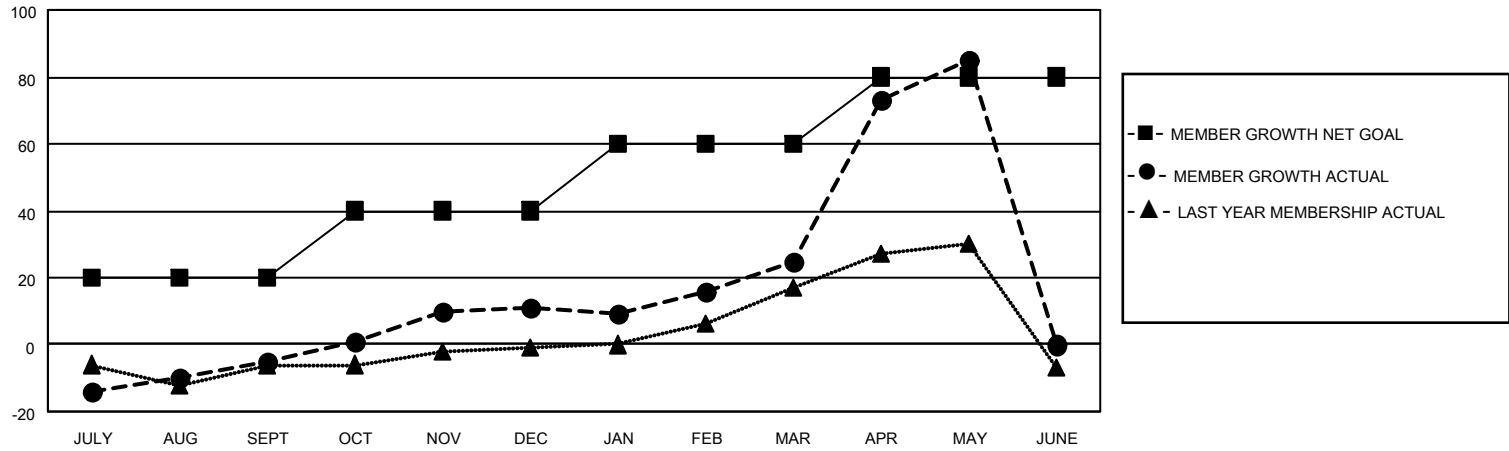
Clubs			
RESULTS FOR 2021-2022			
QUARTER	NEW CLUB GOAL	NEW CLUBS	DROPPED CLUBS
JULY/AUG/SEPT	0	0	0
OCT/NOV/DEC	0	0	0
JAN/FEB/MAR	0	0	0
APR/MAY/JUNE	0	0	0

Members			
RESULTS FOR 2021-2022			
QUARTER	MEMBER GROWTH NET GOAL	MEMBER GROWTH ACTUAL	DROPPED MEMBERS ACTUAL (including transfers)
JULY/AUG/SEPT	20	22	27
OCT/NOV/DEC	20	50	34
JAN/FEB/MAR	20	34	20
APR/MAY/JUNE	20	62	2

GOALS AND ACTUAL NEW CLUBS CUMULATIVE



GOALS AND ACTUAL MEMBERS CUMULATIVE



DROPPED CLUBS: 0	30 CLUBS OF 38 ADDED 1 OR MORE NEW MEMBERS	<p style="text-align: center;"><u>GENDER DISTRIBUTION</u></p> MALE 669 (52.76%) FEMALE 599 (47.24%) NON BINARY 0 (0.00%) PREFER NOT TO ANSWER 0 (0.00%)
<p style="text-align: center;"><u>DROPPED MEMBERS</u></p> DECEASED 17 CLUB CANCELLED 0 OTHER 66 <hr/> TOTAL 83	<p style="text-align: center;">CLICK HERE FOR CUMULATIVE MEMBERSHIP DATA</p>	TOTAL FAMILY UNIT MEMBERS 454 FAMILY MEMBERS PAYING HALF DUES 238